

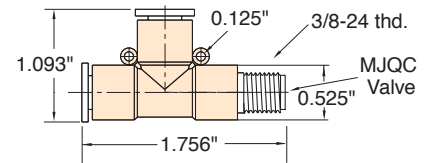
## PUSH-QUICK FITTINGS WITH MJQC QUICK-CONNECT PORT



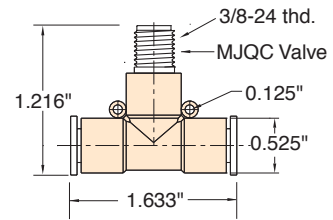
These 1/4" fittings combine the quick, easy Push-Quick functionality with the flexibility and security of the Quick-Connect series with no circuit interruption. MJQC Quick-Connect Caps (ordered separately above) attach to the threaded port allowing for a variety of uses.

Part No.	Description
<a href="#">PQ-RT08QC</a>	Run T with 3/8-24 Thread
<a href="#">PQ-BT08QC</a>	Branch T with 3/8-24 Thread

- Serves as an easy connection point for temporary functions/circuitry
- Quickly test for air flow
- Easy connection to valves, cylinders, hose, etc.
- Check air pressure via a gauge
- Use as a dump valve/vent



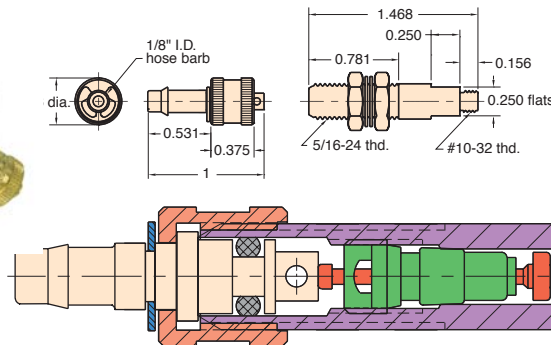
**PQ-RT08QC**



**PQ-BT08QC**

### MQC-2S

#### Quick Connect Assembly



Flow ←

**Type:** One way check quick connect assembly of valve body [MQC-V2](#) and hose connector [MQC-F](#)

**Material:** Body- brass, Stem- brass

**Seals:** Buna-N

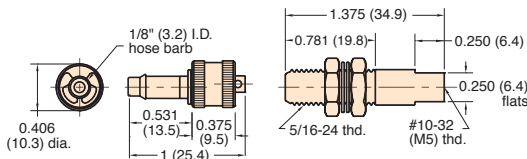
**Working Pressure:** 0 to 300 psig

**Air Flow:** 3.0 scfm @ 50 psig  
5.8 scfm @ 100 psig

**Triple Barb:** Order [MQC-2](#)

### MQC-3S

#### Quick Connect Assembly



**Type:** One way check quick connect assembly of valve body [MQC-V3](#) and hose connector [MQC-F](#)

**Material:** Body- brass, Stem- brass

**Seals:** Buna-N

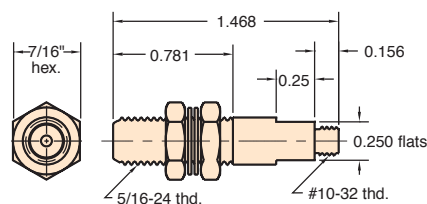
**Working Pressure:** 0 to 300 psig

**Air Flow:** 3.0 scfm @ 50 psig  
5.8 scfm @ 100 psig

**Triple Barb:** Order [MQC-3](#) or [MQC-3-M5](#) (metric)

### MQC-V2

#### Valve Body



**Material:** Brass

**Thread:** #10-32 male

**Mounting:** In panel or bracket to 1/4" thick with two 7/16" mounting nuts and lockwashers furnished; also screws directly into operative unit or manifold

**Seals:** Buna-N

**Use:** For connection with external shut-off to external hose, use hose connectors: [MQC-F](#), [MQC-FT](#), [MQC-F2](#)

**Options:** (-ENP)

